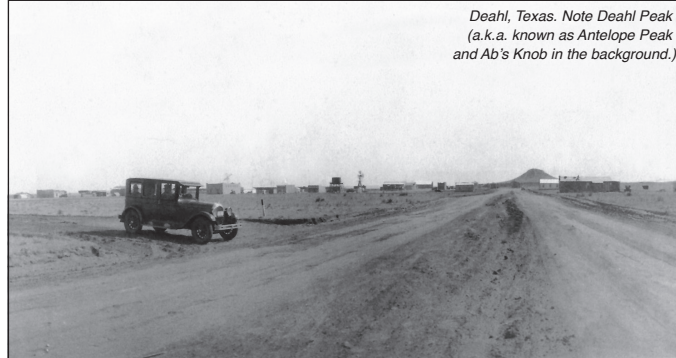


A LOOK BACK IN HUTCHINSON COUNTY HISTORY



*Deahl, Texas. Note Deahl Peak
(a.k.a. known as Antelope Peak
and Ab's Knob in the background.)*

Deahl, Texas

During the Oil Boom of the mid 1920's, the townsite of Deahl was established on land owned by rancher G. W. Deahl and his wife, Rachel Hardin Deahl. Located at the foot of an unusually-shaped mesa known as Antelope Peak, Deahl Peak and Ab's knob, Deahl was established as a flag stop on the Chicago, Rock Island and Gulf Railway. The town of Deahl was established on October 23, 1926 and discontinued on October 31, 1928. The population reached as many as 200. A Post Office was established in 1926 and because people continued to live in the area, a district school was opened there in 1936, but the settlement failed to survive as oil and gas development moved to the north and east. By 1949, the land had returned to prairie and trains no longer stopped there. The school was closed that year. Sometime between 1929 and 1935, the school building was moved to 601 Coble in Borger to be utilized as a residence for Dr. A. F. Hansen and his family. The building remains on Coble Street and has been recently restored. ■

618 North Main Street
Borger, Texas 79007
806-272-0130

Open Tue-Fri
9am-5pm
Sat-11am-4:30pm



Hutchinson County
Historical Museum

Free admission

Handicapped
accessible

Kid-friendly

www.hutchinsoncntymuseum.org